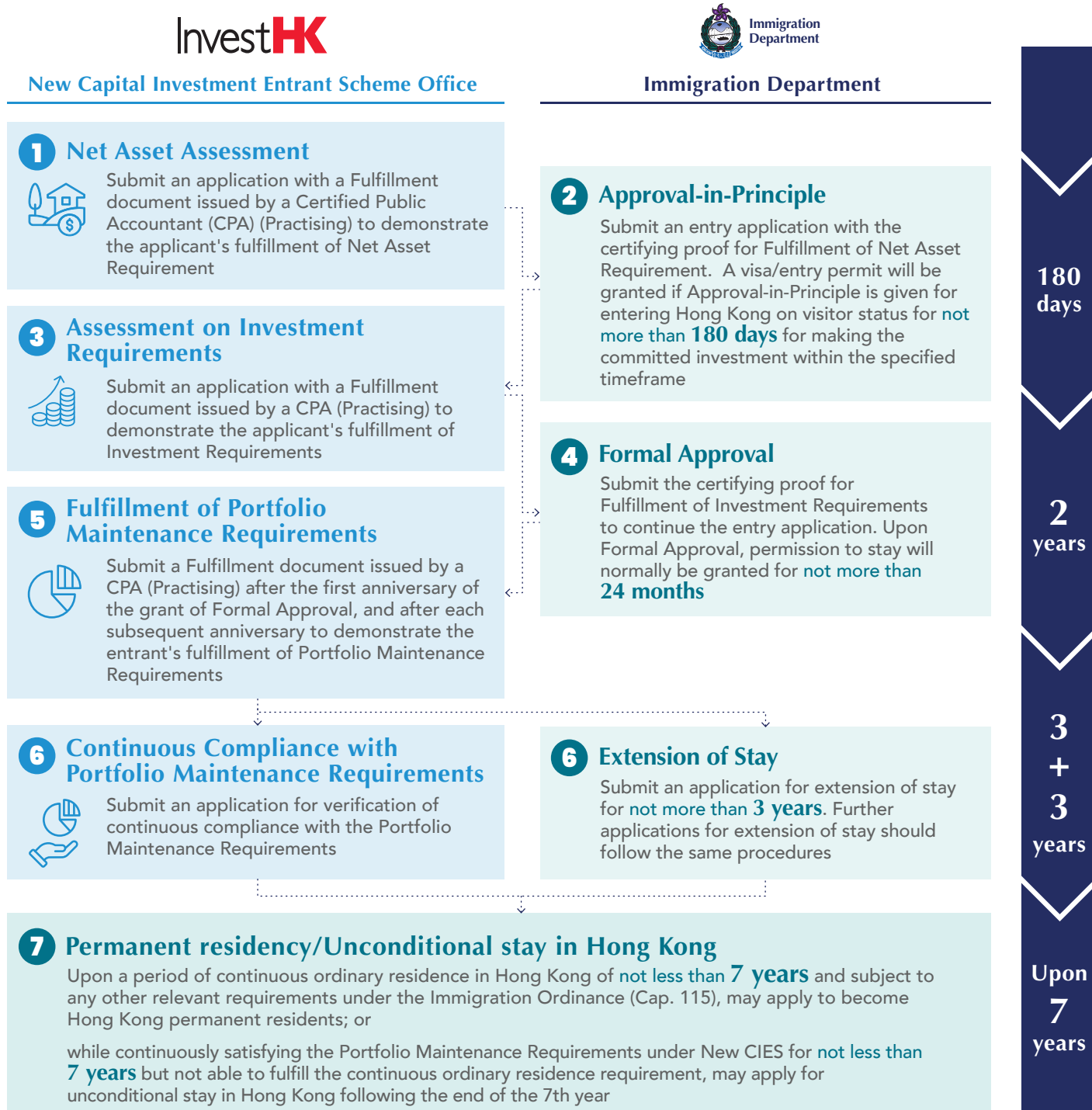


Your Path to Hong Kong Residency - New Capital Investment Entrant Scheme

The New Capital Investment Entrant Scheme (New CIES) provides qualified investors with a pathway to permanent residency and access to Hong Kong's dynamic investment ecosystem. Hong Kong enables global investors and high-net-worth individuals to grow their wealth as residents, benefiting from a favourable tax regime, a business-friendly environment, a hub with abundant investment opportunities, and a high quality of life.

New CIES Application Procedures



Eligibility Criteria



Age

18 years old or above



Scope

Foreign nationals¹, Chinese nationals with foreign permanent resident (PR) status, Macao Special Administrative Region residents, or Chinese residents of Taiwan



Net assets

Net assets of not less than HK\$30 million Net throughout six months preceding the application for Net Asset Assessment



Investment

Investment of not less than HK\$30 million Net in Permissible investment assets within a specified timeframe



No adverse record

Meet normal immigration and security requirements



Capability

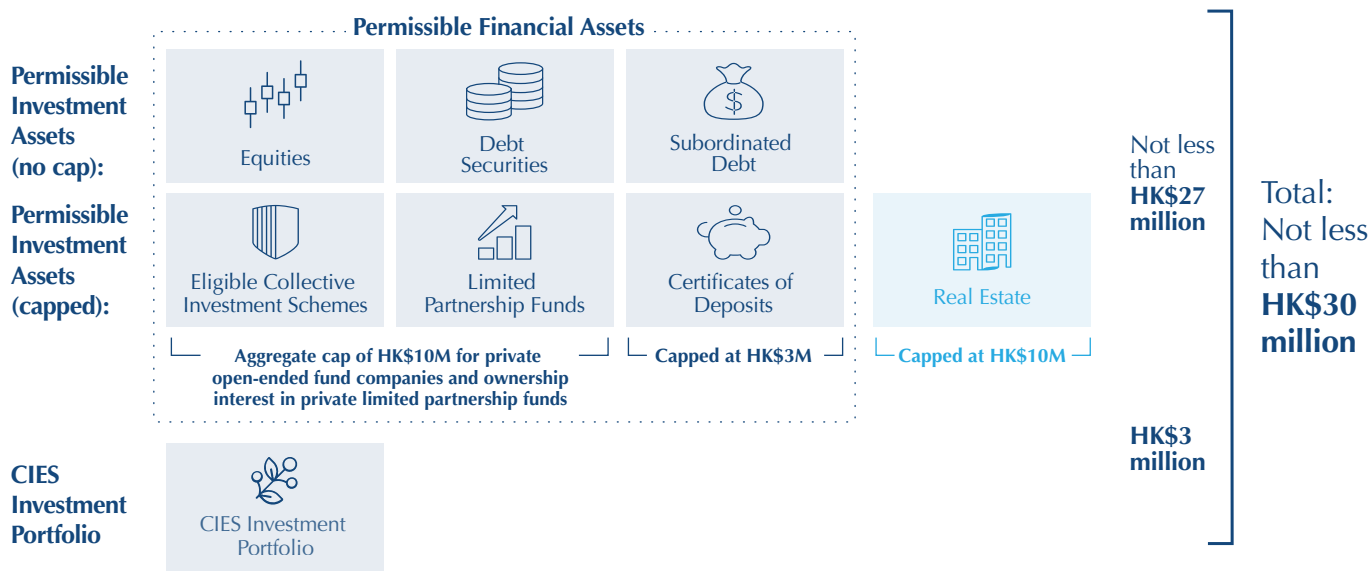
Capability of supporting and accommodating the applicant and his/her dependants²

¹ Nationals of Afghanistan, Cuba and Democratic People's Republic of Korea are excluded. Stateless persons who have obtained PR status in a foreign country with proven re-entry facilities can also apply.

² Dependants refer to his/her spouse, or the other party to a same-sex civil partnership, same-sex civil union, "same-sex marriage", opposite-sex civil partnership or opposite-sex civil union entered into by the applicant in accordance with the local law in force of the place of celebration and with such status being legally and officially recognised by the local authorities of the place of celebration; and his/her unmarried dependent children aged under 18 years old.

Permissible Investment Assets

An applicant must make the committed investment in the following assets within a specified timeframe:



New Capital Investment Entrant Scheme Office

Website: <https://www.newcies.gov.hk>

Telephone: (852) 3904 3001

Email: newcies@investhk.gov.hk

Address: 15/F, Revenue Tower, 5 Gloucester Road, Wan Chai, Hong Kong

Opening hours: 9:00 a.m. to 12:30 p.m. and 1:30 p.m. to 5:00 p.m., Mondays to Fridays (closed on Saturdays, Sundays and public holidays)